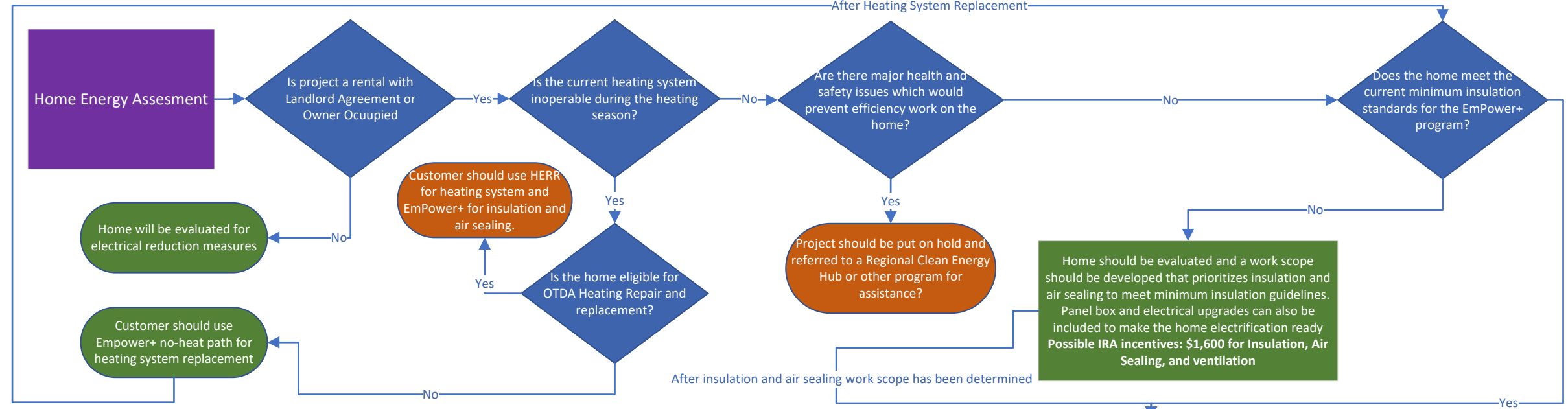


EmPower+ Home Efficiency Measure Decision Tree for Contractor and Hub use



Maximum IRA incentive is \$14,000. IRA incentives are applied to projects after the project has met the \$10,000 cap for Empower+ funding. Customers qualifying for OTDA funding will be eligible for up to \$20,000 in funding but will not be eligible for IRA funding when OTDA funding is available. All measures must meet EmPower+ program requirements and are subject to program level measure incentive caps.

